

Client name: CBD Spain Medicinal Food S.L.

Type of sample: extract

Date of delivery: 14-02-2018

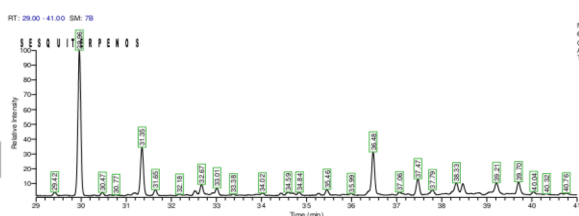
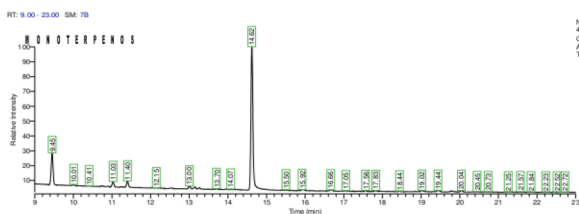
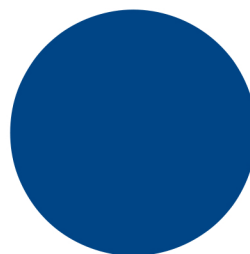
Humidity:
Sample: Tibor #21

Comments:
Date of analysis: 11-04-2018

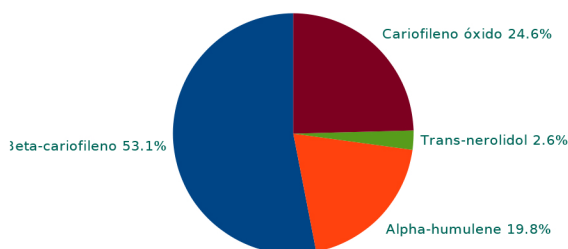
N.I laboratory: M18-T0392

MONOTERPENES

Alpha-Pinene	0.107%
Camphene	N.D.
(-)-beta-Pinene	N.D.
Beta-Myrcene	N.D.
delta-3-Carene	N.D.
Alpha-Terpinene	N.D.
p-Cymene	N.D.
d-Limonene	N.D.
Eucaliptol	--
Cis-Ocimene	N.D.
Gamma-Terpinene	N.D.
Trans-Ocimene	N.D.
Terpinolene	N.D.
Linalool	N.D.
(-)-Isopulegol	N.D.
Geraniol	N.D.

CHROMATOGRAM

MONOTERPENES RELATIVE RATIO

SESQUITERPENES

Beta-caryophyllene	0.915%
Alpha-humulene	0.341%
Cis-Nerolidol	N.D.
Trans-nerolidol	0.044%
Caryophyllene oxide	0.424%
(-)-Guaiol	N.D.
(-)-alpha-Bisabolol	N.D.

SESQUITERPENES RELATIVE RATIO


N.D. =<0.04%