

Client name: CBD Spain Medicinal Food S.L.

Type of sample: extract

Date of delivery: 14-02-2018

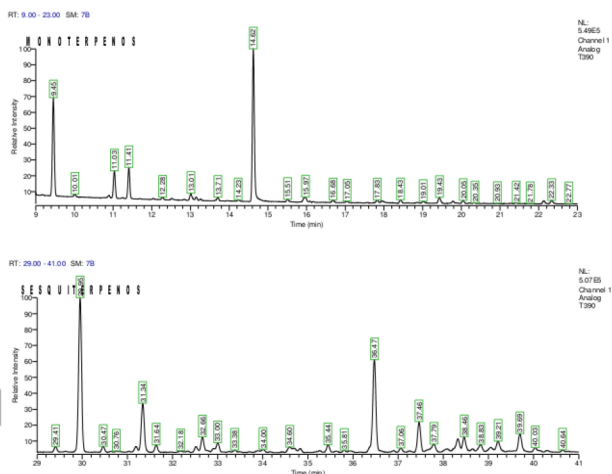
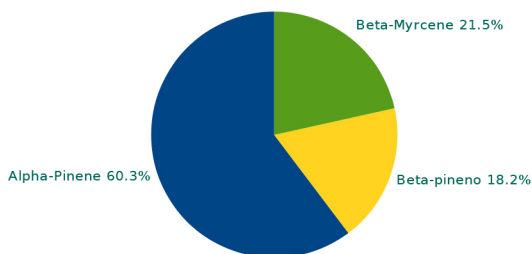
Humidity:
Sample: Carmagnola #5

Comments:
Date of analysis: 11-04-2018

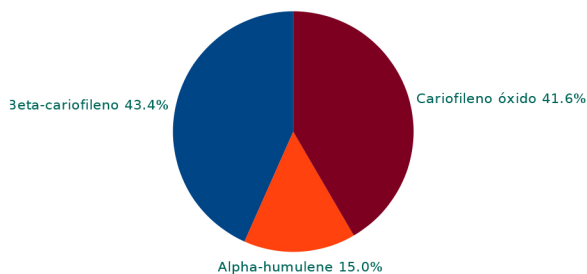
N.I laboratory: M18-T0390

MONOTERPENES

Alpha-Pinene	0.305%
Camphene	N.D.
(-)-beta-Pinene	0.092%
Beta-Myrcene	0.109%
delta-3-Carene	N.D.
Alpha-Terpinene	N.D.
p-Cymene	N.D.
d-Limonene	N.D.
Eucaliptol	--
Cis-Ocimene	N.D.
Gamma-Terpinene	N.D.
Trans-Ocimene	N.D.
Terpinolene	N.D.
Linalool	N.D.
(-)-Isopulegol	N.D.
Geraniol	N.D.

CHROMATOGRAM

MONOTERPENES RELATIVE RATIO

SESQUITERPENES

Beta-caryophyllene	0.666%
Alpha-humulene	0.231%
Cis-Nerolidol	N.D.
Trans-nerolidol	N.D.
Caryophyllene oxide	0.639%
(-)-Guaiol	N.D.
(-)-alpha-Bisabolol	N.D.

SESQUITERPENES RELATIVE RATIO

N.D. = <0.04%